

Friends of Springhallow



Winter Newsletter

November 2023



Welcome to the Winter edition of the Friends of Springhallow newsletter!

Our charity is here to support students at Springhallow School and Post 16, with specialist equipment, resources and services. We recently had an exciting relaunch and our first event was the Summer Fair in July where we raised over £7000 towards our minibus appeal. It was a brilliant day, filled with fun and happy faces, with thanks to Assistant Head teacher Katie for her hard work bringing it all together. And an extra special mention to Ayin Gurling (AKA Splattergirl) for raising an additional £2590 raffling a custom made doll! We have lots planned for the coming months and the remainder of the school year, so please do get involved if you can. We want to build on the strong community already established, creating new connections and support for families, as well as much needed funds for the school.

To get in touch with us you can send an email to: friends@springhallow.ealing.sch.uk

Trudy Nickels (Post 16 parent and Chair of Trustees)

Christmas cards

We will have a range of colourful, festive cards on sale very soon, to raise money for our charity. Each card has been designed by one of the students and we think they are fantastic! Get in touch with us to buy or pick some up at the school or college receptions and events below...



Upcoming events

We are collaborating with the school on two great Winter events:

Friday 15th December 5-7pm - Festive Party
Raffle, lucky dip, refreshments (including samosas and mince pies), Enterprise stalls.
Open to all students and families - £1 entrance

Tuesday 19th December 1.15-2.30pm
Winter Shine - Musical performances from students across all three depts - Plus raffle

Get involved

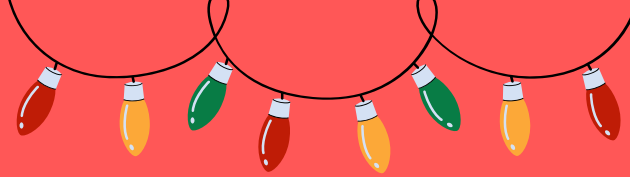


We would love for you to get involved by joining our membership list, sharing your ideas...or even becoming a trustee. Scan the QR code or visit this link to find out more:

<https://www.surveymonkey.com/r/FriendsofSpringhallow>

Follow us on social media to keep up to date with our latest news and activities





Springhallow Minibus Appeal

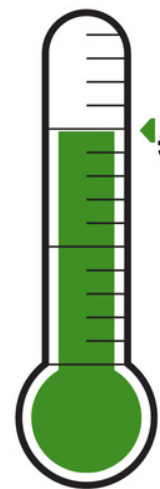
We are aiming to raise £25,000 to buy a new minibus for Post 16 and the main school site, therefore supporting over 160 students to engage with their community.

Whilst the school strives for students to use public transport where possible, for some educational visits, this may not be possible. All of the students have a primary diagnosis of autism, therefore for some the distance may be too far, weather can be a challenge but also staff support on public transport may be limited and we want to ensure all students are safe at all times. Having an additional bus that supports students to continue to thrive in their community will benefit their broad and balanced curriculum.

Some examples of how the minibus would be used onsite include work experience when washing/cleaning it, supporting lessons by teaching them how to maintain a vehicle. Off site, students can get to places quickly having less impact on their timetable, but also enjoy opportunities that may be out of borough, such as trips and residentials. To find out more or to support our appeal with a donation or fundraising event please visit our Gofundme page - <https://gofund.me/122d5010> or use QR code:



Goal
£25,000



Raised
£17,590



You can now raise money for Friends of Springhallow when you sell your unwanted goods on ebay! It's quick and easy to list things and you can choose the percentage of sale price to donate (search for our charity from the list provided). Every penny donated will be put to great use in supporting children and young people with autism.

**Wishing you a
merry Christmas**



We hope you all enjoy the festive period and look forward to seeing you at an event or activity in the coming weeks/months!